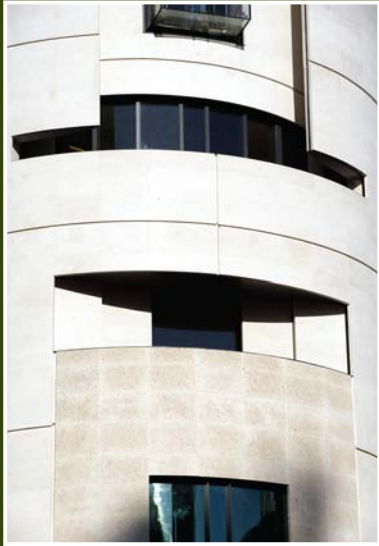




By appointment to  
Her Majesty The Queen  
Building Façade Restoration  
and Conservation



## BBC Broadcasting House Egton House

The redevelopment of Broadcasting House in the centre of London is the BBC's most ambitious property project and its single largest capital initiative ever.

When complete in 2010, this 80,000 square metre structure will provide state of the art production and broadcast facilities for staff in Radio & Music, News and the World Service, and be the hub of the BBC's national and international live output.

PAYE Stonework were instructed to clean and repair the original façades and the ornate mosaic and stone reception foyer and then complete the design development, manufacture and installation of the hand set stone to the curved façades of Egton House after the original contractor went into receivership.

The project involved coordinating the design to interface with projecting glass box windows and curved balconies whilst contending with exceptionally large cavities. The whole building is floating on shock absorbers at first floor level which are designed to prevent the transfer of noise from the underground railway line beneath to the radio transmitting studios within the building. The building is a fine example of contemporary architecture using hand set stone to create stunning curved façades.

- **Cleaning**
- **Repair**
- **Conservation**
- **Extension**
- **Adaption**
- **Surveys**
- **Budgets**
- **Technical advice**



# PAYE

[www.payestone.co.uk](http://www.payestone.co.uk)

Stationmasters House **Mottingham Station Approach London SE9 4EL**  
Telephone 020 8857 9111 Fax 020 8857 9222  
[enquiries@payestone.co.uk](mailto:enquiries@payestone.co.uk)