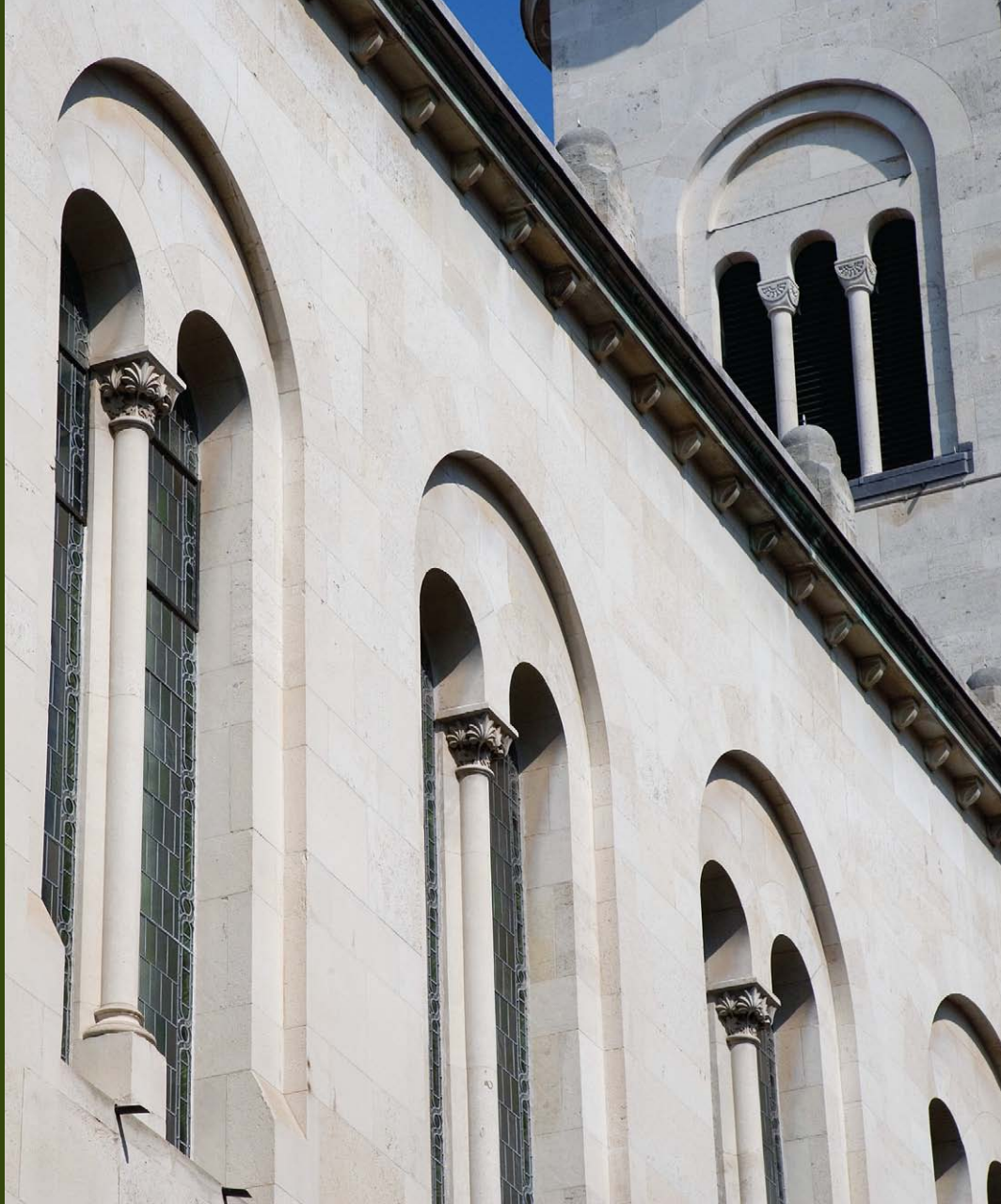




By appointment to
Her Majesty The Queen
Building Façade Restoration
and Conservation

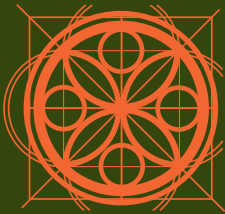


Cadogan Hall

The conversion of a Grade II listed redundant church building into a multi-purpose arts venue for musical rehearsal and performance, exhibitions, meetings and conferences. The building (the former First Church of Christ Scientist) provides a permanent home for the Royal Philharmonic Orchestra and is a distinctive landmark in the Chelsea townscape. Cadogan wanted to bring the building back into public realm with a range of uses suited to the fine interior spaces and the building's civic and townscape presence.

PAYE's specialists were appointed to clean, repair and conserve the external façades.

- **Cleaning**
- **Repair**
- **Conservation**
- **Extension**
- **Adaption**
- **Surveys**
- **Budgets**
- **Technical advice**



PAYE

www.payestone.co.uk

Stationmasters House Mottingham Station Approach London SE9 4EL
Telephone 020 8857 9111 Fax 020 8857 9222
enquiries@payestone.co.uk